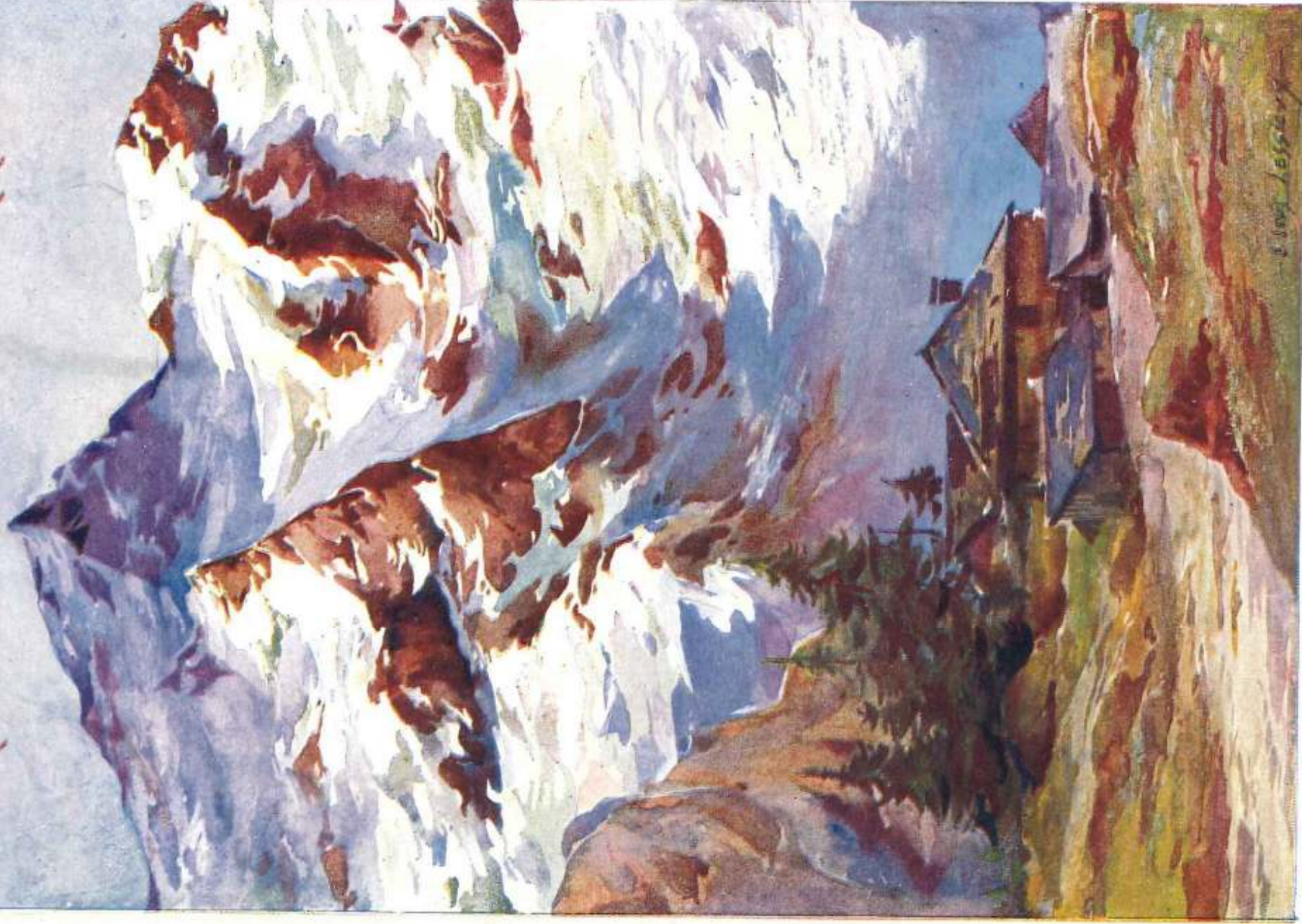


CHEMINS DE FER

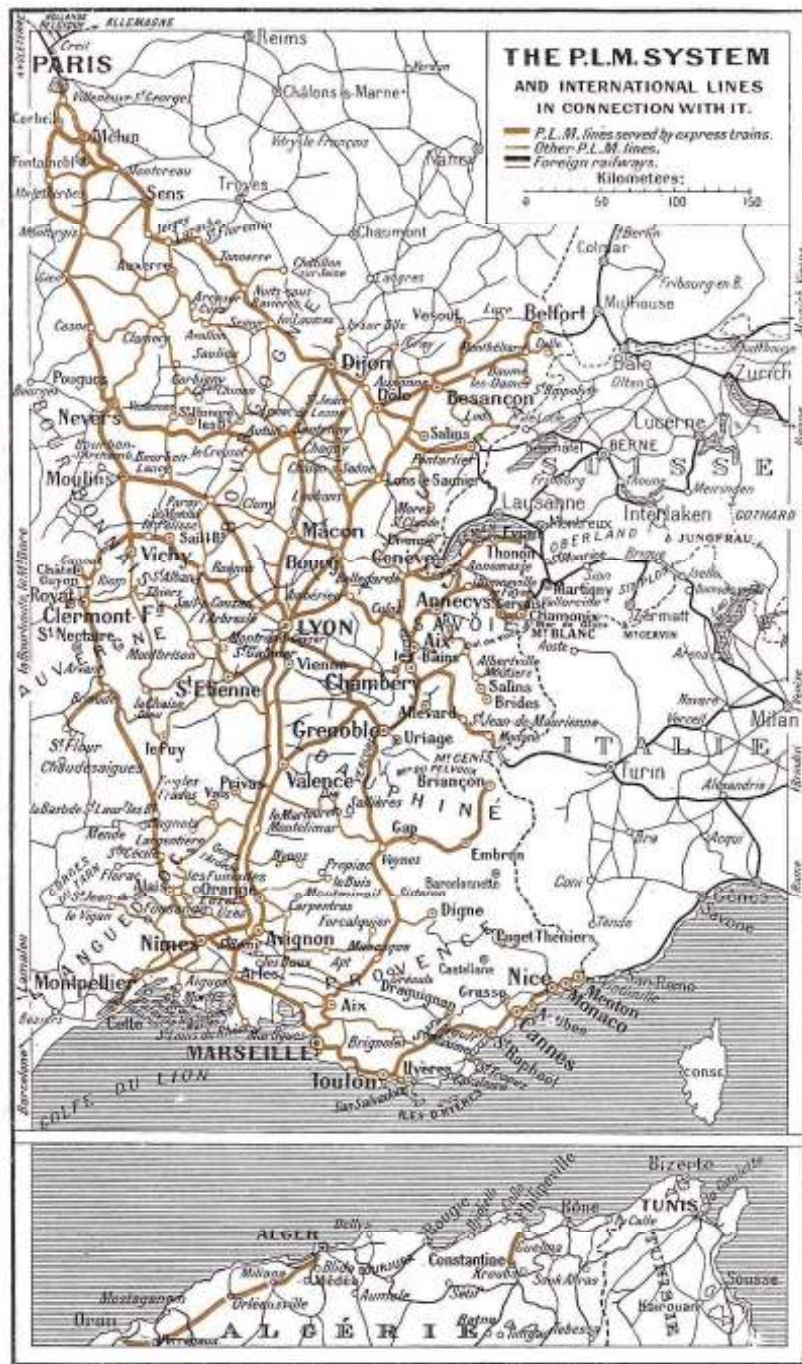
PARIS-LYON-MÉDITERRANÉE



PARIS, LYONS,
AND MEDITERRANEAN RAILWAY



THE VALLEY OF THE SEINE
JURA, SAVOY, DAUPHINY
BURGUNDY, NIVERNAIS
AUVERGNE, CÉVENNES, VIVARAIS
VALLEY OF THE RHONE
PROVENCE
THE RIVIERA, CORSICA



These three familiar letters designate one of the greatest railway systems in the world. Radiating over about one third of France, the PARIS, LYONS, AND MEDITERRANEAN RAILWAY, with the addition of its Algerian lines, measures more than 6150 miles, and the great natural and industrial resources of the regions traversed ensure it a heavy traffic all the year round.

A delightful climate, and an infinite variety of beautiful landscapes, attract tourists to their favourite line, the P. L. M. Within its sphere are included :

First-class commercial and industrial centres : *Dijon, Lyons, Saint-Etienne, the Creusot, Marseilles, etc. ;*

Thermal stations of world-wide fame : *Vichy, Evian, Aix-les-Bains, Royat, Châtel-Guyon, Pougues, Vals, Brides, Uriage, Allevard, etc. ;*

Alpine centres and climatic resorts frequented by tourists from every land : *Chamonix, Argentière, Saint-Gervais, Pralognan, Bonneval-sur-Arc, La Grave, Saint-Pierre-de-Chartreuse, etc. ;*

Towns of great archaeological interest, such as the ancient cities of *Vienne, Orange, Avignon, Arles, Nîmes, and Aigues-Mortes*, containing many monuments of the mighty Roman Empire and of the art of the Middle Ages.

Taking a few places almost at random, this booklet purposes to give a brief sketch of these famous parts, the most beautiful in France : *Jura, Savoy, Dauphiny, Cévennes, Auvergne, Provence, Riviera.* Any attempt to render the great charm of their landscapes would be made in vain. Once seen, they will always be re-visited.



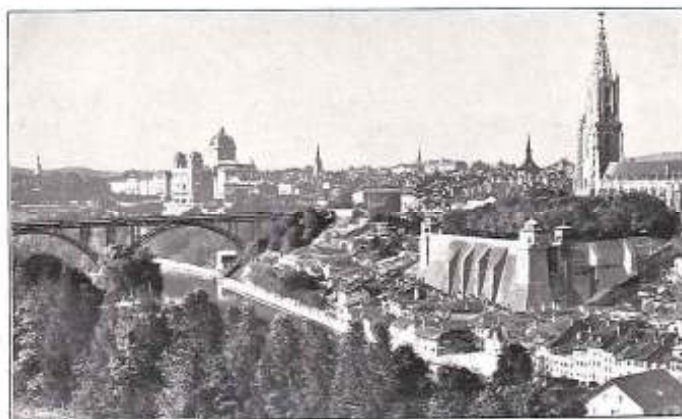


The P. L. M. offers moreover a natural, pleasant, and rapid means of travelling to *Rome, Naples, Venice, and Florence*; by the *Mont-Cenis, Ventimiglia, and the Simplon* it commands the whole of *Italy*; and by *Marseilles* it opens up the *Orient and Greece, Egypt, Tunis, Algeria, Morocco, Corsica, and all the enchanting islands of the Mediterranean.*

The P. L. M. System, again, by *Pontarlier, Geneva, Evian-Saint-Gingolph, and Chamonix-Martigny*, affords the best means of access, and the most beautiful, to all parts of **SWITZERLAND**, viz. to *Neuchâtel, Berne, Interlaken* at the foot of the *Jungfrau, Lausanne*, all the famous resorts around **Lake Lemman** (*Vevey, Clarens, Montreux, etc.*), *Martigny (Grand Saint-Bernard), Zermatt*, at the foot of the *Matterhorn* and the immense glaciers of *Monte Rosa, etc.*

We would remind our readers that the P. L. M. trains — express, fast, and *trains de luxe* — realise the ideal of speed and comfort, the splendid bogey carriages enabling the longest journey to be made without fatigue. The *matériel de luxe* comprises every modern improvement: sleeping-saloons with two beds, with sheets; sleeping-saloons for three, without sheets; sleeping-compartments with two or three beds and special dressing-room; and *courette* compartments with a special dressing-room to each. In the most recent carriages communication is provided between two *compartiments de luxe* with complete bedding for the night, so that a family of five can travel quite comfortably in their own private apartment.

In 1911 the P. L. M. established a splendid motor-car service to enable tourists to travel in a few days from *Nice to Evian*, from the *Mediterranean to Lake Lemman*, and along the "**Great Alpine Route**" through the heart of the **Mountains**. Thanks to this service, and to the numerous other P. L. M. motor-car services in correspondence with it, the **French Alps**, that admirable region to which tourists are flocking in ever increasing numbers, can now be visited with every advantage as to speed and comfort.



BERNE.



Lake Maggiore.
Isola Bella.



Venice.
The Grand Canal.



The Matterhorn.



THE VALLEY OF THE SEINE.

Many parts of France are justly renowned, but none is more varied than the delightful valley of the Seine, with the monuments, towers, and belfreys of Paris rising above it. On remounting the river towards the S.-E. one is particularly charmed and surprised by the diversity of the landscape. As we leave the capital we remark many a quiet nook, with cheerful cottages and picturesque hamlets; but soon the spreading verdure and the high woodlands herald the most beautiful forest in France — FONTAINEBLEAU, with its historic oaks, odd, fantastic rocks, legendary gorges, and great lake, where aged carps have sported for centuries, that reflects a superbe *Palace* replete with memories of rich festivals and of kings long dead.

Old feudal cities, Moret and Nemours, are near at hand, and Marlotte, Barbizon, Montigny-sur-Loing, made famous by painters, and other picturesque corners that linger in the memory.

MONTGERON. — Forest of Sénart, Senlis Mill, Jarcy Mill.

BRUNOY. — Talma's House, Yerres Valley.

MELUN. — Churches of Notre-Dame and of Saint-Aspais, *Château de Vaux-le-Vicomte*, Lys Abbey, *Barbizon*, Bois-le-Roi.

CORBAIL. — At the confluence of the Essonne. Church of Saint-Spire. Great Mills. Environs: *Le Coudray*, Morsang, Seine-Port.

NEMOURS. — On the Loing. Church of Saint-Jean (13th, 16th c.). *Castle* (12th, 15th c.) and Museum. Environs: *Rochers Verts*, *Dumée*, *Chaintreauville*, *Larchant*, *Villiers-sur-Grez*, *Château-Landon*.

JURA.

Apart from the usual charm of mountains of moderate height, the Jura has beauties and aspects of its own. On its high plateaus, tier above tier, the bright-green velvet of the pasture-land relieves the darker hues of the finest fir-forests in France, and the lakes are not less limpid than those which fill the long gentle hollows of the "vaux". In sharp contrast with the verdure, the white cliffs are cleft by *calées* (hollows), pierced by *cluses* (gulleys), and worn into grottoes and caves, with rushing rivers — no mere springs — gushing forth from the mysterious womb of the earth.

BESANÇON. — Interesting old town on a peninsula formed by the Doubs. *Roman Monuments*. *Granvelle Palace* (16th c.). Museum. *Micaud Promenade*. *Bathing Establishment of La Mouillère*



Palace of Fontainebleau.



The Mare aux Pigeons.



The Druids Sphinx.

Millet's and Rousseau's Rock.



Castle of Vaux-le-Vicomte.



(fine park). Environs: Chapel of Les Buis, Springs of Arcier, Grace-Dieu Glacier, Osselle Grotto, Valley of the Dessoubre, Consolation, Source of the Loue, Roches Pass. Saut du Doubs, La Chaux-de-Fonds, Gorges of the Areuse, Lake of Neuchâtel.

SALINS. — Thermal station. Mont-Poupet (853 m.). Environs: Alaise, Nans-sous-Sainte-Anne, Source of the Lison, Creux Billard, etc.

LONS-LE-SAUNIER. — Thermal station. Environs: **Baume Rocks**, **Hérissou Cascades**, *Lake District* (Chalain, Chambly, Val, Ilay, etc.). New P. L. M. Line, very picturesque, from Lons-le-Saunier to Saint-Claude.

CHAMPAGNOLE. — Excursion centre: Source of the Ain, Lake and Abbey of Grandvaux, Les Planches-en-Montagne, etc.

PONTARLIER. — Forest-theatre, Winter-sports, Defile of the Larmon, The Grand Taureau (1323 m.), and Saint-Point Lake, The Blue Spring, Vallorbe, *Valley and Lake of Joux*, Dent de Vaulion (1486 m.), Mont-Tendre (1680 m.).

MOREZ. — Gorges of the Bienne. The *Roussas* (1110 m.): *winter-sports*. Interesting run on the P. L. M. Line from Morez to Saint-Claude.

COL DE LA FAUCILLE. — The *Dôle* (1680 m.), Saint-Cergues.

SAINTE-ANNE. — On the flank of Mont-Bayard (956 m.), at the confluence of the Bienne and the Tacon. Cathedral (remains of a famous abbey). Environs: *Valley of Flumen* (cascades), Oyonnax and the *Saut de Charmine*.

NANTUA. — *Lake of Nantua*, Mont-d'Ain (1300 m.), Pradon Valley, Sylan and Génin Lakes, Charix Cascade, Izernore, an ancient Gallo-Roman city, etc.

BOURG. — **Church of Brou**, built by Marguerite of Austria early in the 16th c., one of the most famous historical monuments in France (rood-loft, choir-stalls, wonderfully-carved marble mausoleum).

DIVONNE. — Watering-place near Lake Lemman.

BELLEGARDE. — Gorges of the Valserine and the Rhône (Arlod Foot-bridge), *Perte du Rhône*, The Credo or Crêt-d'Eau (1624 m.), Valserine Viaduct, Credo Tunnel (3900 m.), Defile of Fort-l'Ecluse (or *Les Cluses*).

SEYSEL. — Divided by the Rhône into two distinct communes (Ain and Haute-Savoie). Fine suspension-bridge. Excursions: Clermont Castle, Val du Fier, etc.

CULOZ (buffet). — The Colombier (1534 m.), Chindrieux and the Chambotte (842 m.), Châtillon, Chanaz, Lake of Bourget.

BELLEY. — Environs: Chat Pass (613 m.) and Lake of Bourget, Yenne, The Rhône in the Pierre Châtel Defile, Saint-Genix, Aoste (Roman antiquities), Fine Cascade of Glandieu.



Pontarlier. Path to the Forest Theatre.



Besnçon. The Black Gate.



SAINTE-ANNE.



Church of Brou. Tomb of Marguerite of Austria.



Gorges of the Loue.



SAVOY.

From the banks of Lake Lemman and the impetuous Rhône the Savoy Alps seem to rise by leaps and bounds, ever higher, to the summit of Mont-Blanc, that colossal giant from whose dazzling brow torrents of snow and ice roll down on France, Switzerland, and Italy.

In proportion as the height increases the climate and landscape change infinitely; but Savoy is always Savoy, where a smiling, winsome, irresistible grace attenuates the harshest features of the mountain: hill-sides clothed with verdure beneath summits crowned with ice, snug perfumed nests below polar deserts, blue lakes motionless amid the roar of leaping waters, flowery vales near terrific gorges, elegant watering-places hard by rustic hamlets and hidden cottages.

ÉVIAN. — Fashionable thermal station rising in tiers from the shore of Lake Lemman, opposite to Lausanne, Vevey, Montreux and Territet. — Excursion centre. *Starting point of the great Alpine Route motor-car service, Evian, Thonon, Nice.* Environs: Amphion, Meillerie, Saint-Gingolph, Abondance, Dent d'Oche (2225 m.), etc.

THONON. — Hydropathic Establishment. Port de Rives (*cable tramway*). Environs: Chartreuse de Ripaille, Ruins of the Allinges, Valleys of the two Dranses, Gorges of the Jetty, Saint-Jean-d'Aulph, Gets Pass (1172 m.).

ANNEMASSE (near Geneva). — Environs: The Salève (1380 m.; electric railway), The Voirons (1486 m.). Valley of the *Giffre*, Taninges, Pic de Marcelly (2009 m.), Les Praz-de-Lys, Samoëns, Sixt, Fer-à-Cheval Cascades, Anterne Pass (2263 m.), The Buet (3109 m.), by the Grenairon chatel-hotel.

BONNEVILLE. — Ascent of the Môle (1869 m.), Pointe d'Andey (1879 m.), The Petit-Bornand, Gorges of Entremont.

CLUSES. — Defile of the *Arve*, Pointe d'Arrou (2468 m.). Valley (Alpine flora) and *Chartreuse* of the Reposoir, Mont Burgy (2305 m.), Pic de Jalouvre (2408 m.).

SALLANCHES. — *Splendid view of the Mont-Blanc Chain*, Aiguille de Varens (2488 m.), Pointe du Colloney (2692 m.), Desert of Platé, Chain of the Aravis and Pointe-Percée (2752 m.), Combloux.

LE FAYET. — Head of the Chamonix, Argentière, Vallorcine, Finhaut, and Salvan *electric line*, the finest means of access to Switzerland by the *Valais*, enabling Martigny, Zermatt, and the Matterhorn to be reached by railway. Return *viâ* Evian and the Lake Lemman Shore.

Mont-Blanc Rack-Tramway to the Bionnassay Glacier (fine amphitheatre) *viâ* Saint-Gervais, by the *Voza Pass* (1700 m.; chalet-restaurant),



EVIAN-LES-BAISS.



THONON-LES-BAISS.



The Montenvers Railway.



Chamonix and Mont-Blanc.



AIX-LES-BAINS. — *Hydropathic and fashionable resort of the highest order.* Environs: **Mont Revard** (1545 m.; rack-railway; winter-sports), Tresserve Hill, **Lake of Bourget**, Châtillon, Chanaz, Castle of Bourdeau, *Abbey of Hautecombe*, Chat Pass (613 m.), Dent du Chat (1400 m.), the Chambotte (842 m.), the Grande-Chartreuse and Grenoble by the *Route des Trois Cols* (the Frêne, 1164 m., the Cucheron, 1080 m., and Porte, 1354 m.). Les Bauges and *Le Châtelard* *via* Pont de l'Abîme. Marlioz, with hydropathic establishment. — Grésy and the Gorges of the Sierroz.

CHAMBÉRY. — Palace of the Dukes of Savoy (Sainte-Chapelle), Museum, Les Charmettes, Jacob Cascades. The Nivolet (1553 m.), *Challes-les-Eaux*. Lake of Aiguebelette. The *Chartreuse* *via* the Frêne Pass (1164 m.), or by the Echelles Road. Abyss of Myans and Mont Granier (1938 m.). Miolans Castle. Aiguebelle and the Grand-Arc (2489 m.).

ALBERTVILLE. — On the Arly. The Grand-Mont (2698 m.). Beaufort and Roselend. Gorges of the Doron. Hauteluce. Arêches. Les Chapieux. Bonneval-les-Bains. Les Mottets, the *Aiguille des Glaciers* (3884 m.; Mont-Blanc Group). The Bonhomme Pass and the Valley of Montjoie.

MOUTIERS-SALINS. — A curious old town at the junction of the Doron and Isère Valleys. — *Hydropathic Establishment.*

The upper Valley of the Isère: Bourg-Saint-Maurice, **Petit-Saint-Bernard** Pass (2157 m.), Lancebranlette (2933 m.), Sainte-Foy, **Mont-Pourri** (3788 m.), Tignes, Lake of Tignes, Val d'Isère, Glaciers of the *Galise* (3340 m.) and of the *Tsanteleina* (3606 m.), etc., Iseran Pass (2769 m.), **Mont Iseran** (3240 m.).

BRIDES-LES-BAINS. — A charming spot at the confluence of the Doron de Bozel and the Allues Torrent. Bois de Cythère, Mont Jovet (2563 m.; chalet-hotel), Gorges and Cascades of Ballendaz.

PRALOGNAN (1425 m.). — The great centre for excursions in the Tarentaise, at the foot of the *Vanoise Glaciers*. Passes of the Vanoise (2527 m.), the Grande-Casse (3100 m.), and Chavière (2806 m.). Grande-Motte (3660 m.). Grande-Casse (3860 m.). **Dôme de Chasseforêt** (3600 m.). Dent Parrachée (3712 m.).

SAINT-JEAN-DE-MAURIENNE. — At the confluence of the Arc and the Arvan. Cathedral, 13th and 15th c., rich in archaeological curiosities. Environs: Echaillon Baths. The Arves Valley, *Aiguilles d'Arves* (3511 m.), Saint-Michel and Perron des Encombres (2828 m.). From Saint-Jean to Briançon *via* Valloires and the Col du Galibier (2658 m.), a grand pass between Savoy and the Dauphiny; and to Grenoble by the Croix de Fer Pass (2062 m.), and the Glandon Pass (1951 m.).

MODANE. — Great international station at the head of the Fréjus, or Mont-Cenis, Tunnel (13052 m. long). Environs: **Mont-Thabor**



Aix-les-Bains.
Lake of Bourget



PRALOGNAN.



Ascent of
Mont-Blanc.

Lake
of Annecy.



(3182 m.); Termignon, *Lanslebourg* and the *Mont-Cenis Pass* (2100 m.); *Bonneval-sur-Arc* (1835 m.), a centre for climbing the glacial mountains of *Méan-Martin*, the *Grand-Méan*, and the *Levanna* (3000 and 4000 m.). *Chalet-hôtel of the Evettes*.

DAUPHINY.

In the Dauphiny not only do we find the *Grande-Chartreuse* region, with its cool verdure in a setting of steep cliffs; and the warm-coloured limestones of the *Vercors* and the *Dévoluy*, where the blazing sun heralds the South; but here, too, the Alps, stern and wild, are clothed with a majesty graver and more sustained than in Savoy.

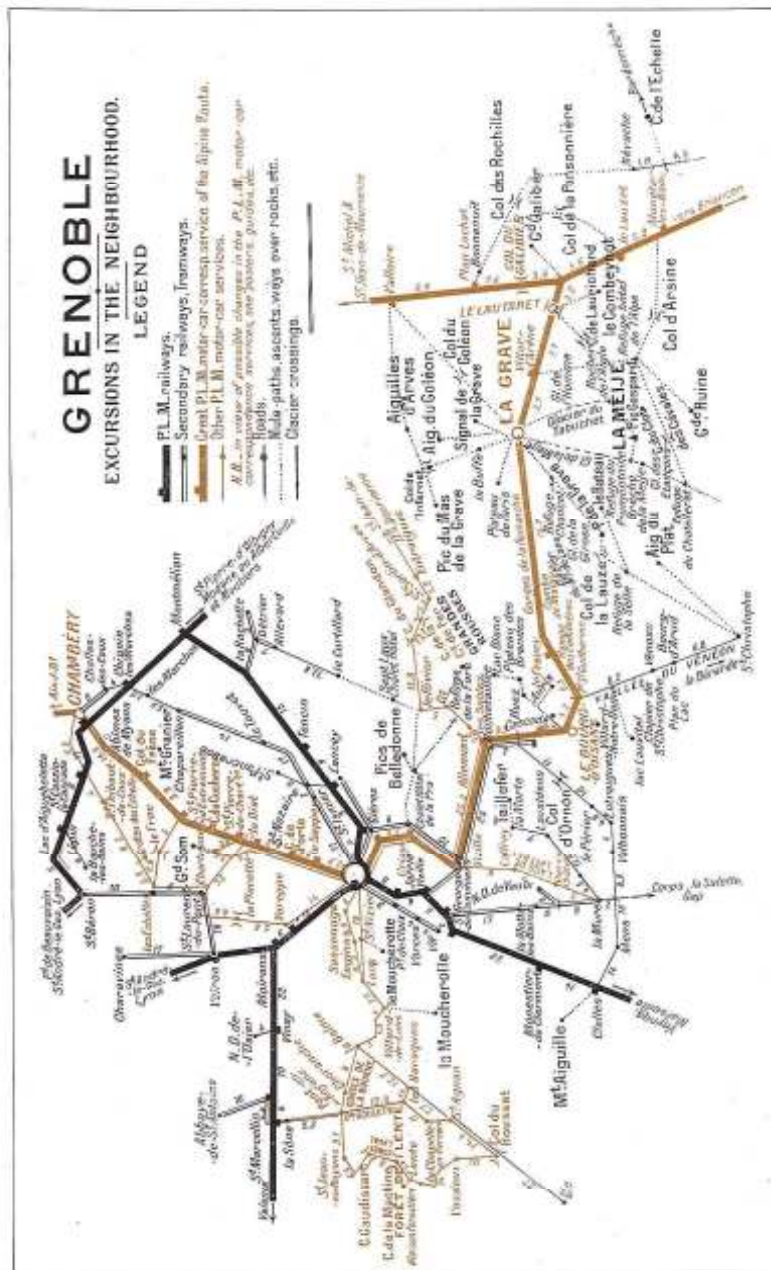
In the *Oisans*, in presence of the immense ice-fields of the *Pelvoux* and the terrific peaks of the *Ecrins* and the *Meije*, the mountaineer, and even the mere spectator, feel with more intensity than elsewhere the fascination of Alpine beauty, of an unearthly splendour that is almost scornful in its serenity. Some are humbled and dazed at the sight of the inaccessible; others are roused to action as at a bold challenge to a trial of strength, and aspire to the rude and wholesome joys that mountain-climbing can bestow.

ALLEVARD. — In the pretty *Bréda Valley*; *Hydropathic Establishment*. — Centre for excursions in the *Allevard* and *Sept-Laux* mountains, *Le Bout du Monde*, *Bramefarine* (1214 m.), the *Gleysin* (2789 m.), the *Puy-Gris* (2911 m.), the *Curtillard*. The *Sept-Laux* (chalet-hotel, 2182 m.). From the *Sept-Laux* to the *Maurienne* by the *Glandon Pass* (1951 m.) and the *Eau d'Olle Valley*.

GRENOBLE. — Splendid situation; capital of the French Alps. University (many foreign students: vacation classes). Famous *Museum*. *Palais de Justice*. *Place Victor-Hugo*. Quays of the *Isère*. *Jardin des Dauphins*, etc.

Numerous communications by railway. Many regular P. L. M. services for the *Chartreuse Mountains*, the *Vercors*, the *Oisans*, the *Briançonnais*, etc.

THE CHARTREUSE MOUNTAINS. — Excursion to *Saint-Pierre-de-Chartreuse* and to the ancient *Monastery*: 1^o by the *Porte Pass* and *Le Sappey*; 2^o *via* *Voiron*, *Saint-Laurent-du-Pont* and the *Route du Désert* (*Saint-Bruno's Bridge*); 3^o *via* *Voreppe*, *La Placette* and *Saint-Laurent*; *via* *Saint-Laurent*, *Les Echelles*, the *Frou Road*, *Saint-Pierre-d'Entremont* and the *Cucheron Pass*. From the *Chartreuse*, ascent of the *Grand-Som* (2023 m.); to the east of the Group, electric-line from *Grenoble* to *Chapareillan* and *Route de Saint-Pancrasse*; to the north and to the west, *La Bauche-les-Bains* *Charavines*, and the *Lake of Paladru*.





VERCORS AND ROYANS. — Sassenage. Gorges of Engins. Villard-de-Lans and the Moucherolle (2289 m.). Goule-Noire Bridge. La Balme and the Ecouges. Gorges of the Bourne. Choranches and its grottoes. Pont-en-Royans. Gorges of the Vernaison. Grands-Goulets. Forest of Lente Combe-Laval Road. Pass of the Rousset (1411 m.) leading into the Diois.

DIOIS. — Die and its environs: Baths of Salières and Le Martouret. Forest of Saou and Roche-Courbe (1592 m.). Mont Glandasse (2025 m.). Luc and the Claps Dam. Gorges of the Gatz, etc.

URIAGE. — Important hydropathic station, 45 minutes from Grenoble. Castle of Saint-Ferréol. Belledonne Chain. Chartreuse of Prémol. Oursière Cascade. Chalets of the Recoïn and the Pra. Chamrousse (2255 m.). Lake Robert. Peak of Belledonne (2981 m.), etc. — Vizille, with castle. Laffrey Lakes. Taillefer Mountains (2851 m.).

BOURG-D'OISANS. — The great Romanche Valley centre for excursions in the Grandes-Rousses and Pelvoux Mountains (3000 to 4000 m.). Sarennes Cascade. Huez and Lake Blanc. Fare Shelter. The Etendard (3470 m.). Pic Bayle (3473 m.). — Peak of Rochail (3070 m.). Lake Lauvitel, etc. From Bourg-d'Oisans to La Mure by the Ornon Pass (1318 m.) and Valbonnais; to La Grave and Briançon by the fine Gorges of the Romanche (Infernet, Combe de Malaval) and the Lautaret Pass (2075 m.); to La Bérarde et Saint-Christophe (Muzelle, 3459 m.; Rouies, 3634 m.; Tête des Fétoules, 3465 m.) and the glorious Vénéon Valley.

LA BÉRARDE. — Mountaineering centre. Tête de la Mays (2522 m.). Etançons Valley. The Meije (3982 m.). Brèche de la Meije. Carrelet Shelter. Temple Pass (3283 m.). The Bans (3651 m.). The Barre des Ecrins (4100 m.).

LA GRAVE. — First-class Alpine centre on the northern slope of the Meije. Glacier of the Meije. Plateau of Paris (2460 m.). La Grave Beacon (2450 m.). Aiguille du Goléon (3429 m.). Aiguilles d'Arves (3511 m.). Alp of Villar-d'Arène. Tabuchet Glacier. The Meije. Bec de l'Homme (3457 m.). Pic Gaspard (3880 m.), etc. Le Lautaret (Alpine flora). Peak of Combeynot (3163 m.). Valley of the Guisanne. Monêtiers-Bains.

BRIANÇON. — Old fortified town facing the Hills of Piemont, at the confluence of the Durance and the Guisanne. — *P. L. M. terminus-hotel.* Winter-sports. Environs: the Mont-Genèvre Pass (1860 m.). The Izoard Pass (2409 m.) and the fantastical defile of the Casse-Déserte. Croix de Toulouse (1973 m.). Saint-Chaffrey Beacon (2570 m.). Notre-Dame-des-Neiges. Prorel Beacon (2572 m.). Pierre-Eyrantz (2906 m.). Pont-Baldy. Valley of the Clarée (Planpinot, Névache, etc.).



Castle of Vizille.



Forest of Lente.
The Combe-Laval Road.



The Meije.



St-Pierre-de-Chartreuse and the Grand-Som.



Grenoble. — The Isère and the Alps.



VALLOUISE. — Alpine centre in the finest valley in the Pelvoux. Crête des Bœufs-Rouges (3454 m.). Les Claux. *Ailefroide chalet-hotel* (1505 m.). Pré de Madame Carle. Shelters of Cézanne (1850 m.) and Tuckett (2504 m.). Blanc Glacier. Pic Coolidge (3756 m.). The Black Glacier. Lemercier's Shelter (2700 m.) and **Mont Pelvoux** (3945 m.).

QUEYRAS. — The Valley and **Gorges of the Guil**, *viâ* Mont-Dauphin station, or *viâ* Guillestre: Combe du Queyras. Château-Queyras. **Aiguilles.** Alp of the Médille. *Abriès.* Valante Pass (2795 m.). **Mont Viso** (3841 m.).

BARCELONNETTE. — *Viâ* Prunières or Guillestre. Centre for excursions in the Ubaye Valley: **Séolane** (2910 m.). Larche Pass (1995 m.). L'Enchastraye (*Le Lauzanier*). Allos Pass (2250 m.). **Lake of Allos** (2237 m.), etc.

EMBRUN. — Cathedral of *Notre-Dame* (12th c.). Mont Saint-Guillaume (2628 m.). The Morgon (2326 m.).

GAP. — Museum. Prefecture (Mausoleum of Lesdiguières). *Tallard Castle.* Sanctuary of *Notre-Dame du Laus.* *Remollon* (geology). Plateau (**winter-sports**) and Pass of Bayard (1246 m.). Champsaur. Corps, La Salette.

TRIÈVES and DÉVOLUY. — Lus-la-Croix-Haute and the *Aiguilles Pass* (2150 m.). The Grand Ferrand (2761 m.). Saint-Maurice-en-Trièves. Tréminis. Clelles-Mens. **Mont Aiguille** (2097 m.). Le Monestier-de-Clermont. Grand-Veymont (2333 m.). Pellafol (near Corps) and the **Obiou** (2793 m.).

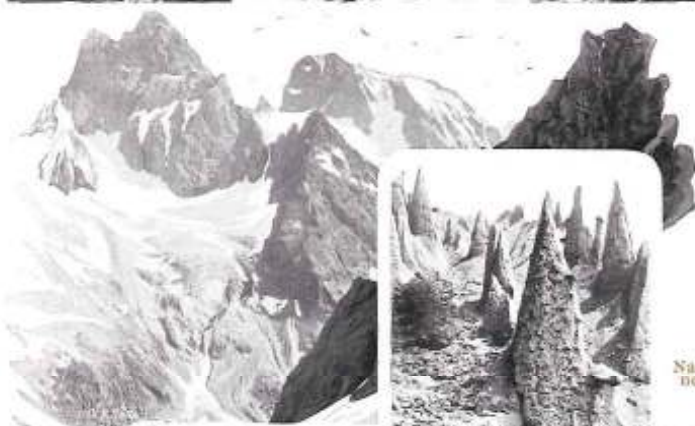
LA MURE. — *Viâ* Saint-Georges-de-Commiers station and the Mure Railway (*very bold electric-line above the Gorges of the Drac*). *La Motte-les-Bains.* La Mure. Corps. Sanctuary of *La Salette.* The Valgaudemar and the **Pic d'Olan** (3578 m.). From La Mure to Vizille *viâ* Matheysine (**Laffrey Lakes**), to Bourg-d'Oisans by Valbonnais and the Ornon Pass (see page 18).

BURGUNDY — NIVERNAIS.

The granitic mountains and the forests of the Morvan, rich sylvan valleys, hills flowing with generous wines, the famous Côte-d'Or rising above the Saône in folds of soft meadow-land sprinkled with tawny cattle, such are the natural charms that would alone suffice to attract the traveller to Burgundy and the Nivernais. There are, moreover, few of the old French provinces in which Art and History have left more abiding monuments, more rooted memories, from the Alesia of Vercingetorix to Autun the "rival of Rome". At every point we are reminded of the arts that flourished so magnificently at the court of the Dukes of Burgundy.



The Barre des Ecrins.



Natural Columns near Remollon.

The Pelvoux.



Alp of the Médille and Mont-Viso.



SENS. — Famous Cathedral. *Officialité* or Synodal Palace (Lapidary Museum). Statue of Jean Cousin, the famous artist.

TANLAY. — Remarkable Castle (1559-1642); fine park (grand canal and reservoir).

ANCY-LE-FRANC. — Castle (1546), rich in curiosities. Both castles are open to visitors.

MONTBARD. — Birthplace of the naturalists Buffon and Daubenton. Environs: Abbey of Fontenay (12th c.).

DIJON. — Ancient capital of Burgundy. Remarkable churches. Palais des Etats et des Ducs (Museum). Chartreuse of Dijon (Moses' Well). Old mansions. Environs: Semur. Ruins of Alesia. Mont-Afrique (584 m.). Valley of the Ouche, etc.

BEAUNE. — Famous Gothic Hospital.

CHALON-SUR-SAONE. — On the Central Canal. Cathedral of Saint-Vincent (12th, 15th c.). Environs: famous Abbey of Saint-Marcel.

TOURNUS. — Church of Saint-Philibert (10th, 15th c.). Greuze Museum.

MACON. — Ancient Cathedral of Saint-Vincent. Prehistoric Museum. Environs: Castles of Montceau and Milly. Saint-Point (tomb of Lamar-tine). Abbey of Cluny. Cormatin Castle.

PARAY-LE-MONIAL. — Church of Saint-Pierre. Monastery of the Visitation. Eucharistic Museum.

AUTUN. — Roman monuments: Promenade des Marbres. Cathedral of Saint-Lazare. Museums. Environs: Mont Beauvray (810 m.). Lake of the Settons.

AVALLON. — Excursion centre (Avallo-nnais and Morvan). Chastellux. La Pierre-qui-Vire. Quarré-les-Tombes, etc.

AUXERRE. — Ancient cathedral of Saint-Etienne; Church of Saint-Germain (13th, 14th c.); remains of a famous abbey; museum, etc.

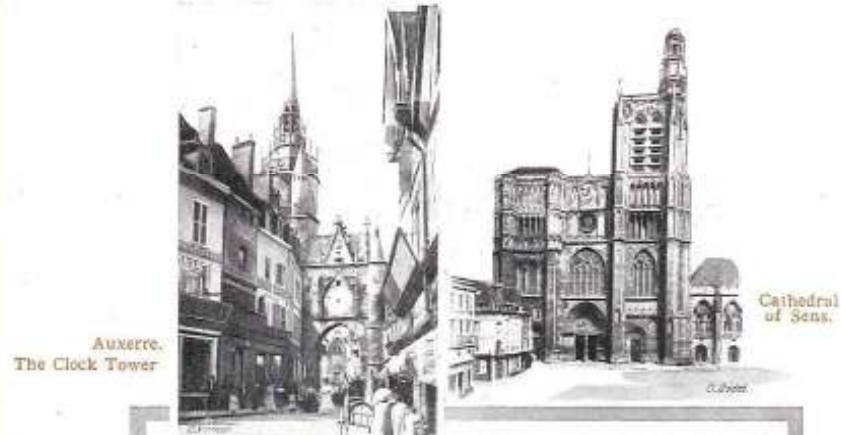
VÉZELAY. — Famous Church of the Madeleine. Environs: Church of Saint-Père. Grottoes of Arcy-sur-Cure and Saint-Moré.

POUGUES. — Hydropathic Establishment. Fine Park.

NEVERS. — Ancient capital of the Nivernais. Churches. Ducal Palace. Croux Gate. Earthenware Manufactory.

SAINTE-HONORÉ-LES-BAINS. — Hydropathic Establishment. Environs: Château-Chinon and the Morvan.

FOREZ, LYONNAIS (see page 24 and 26).

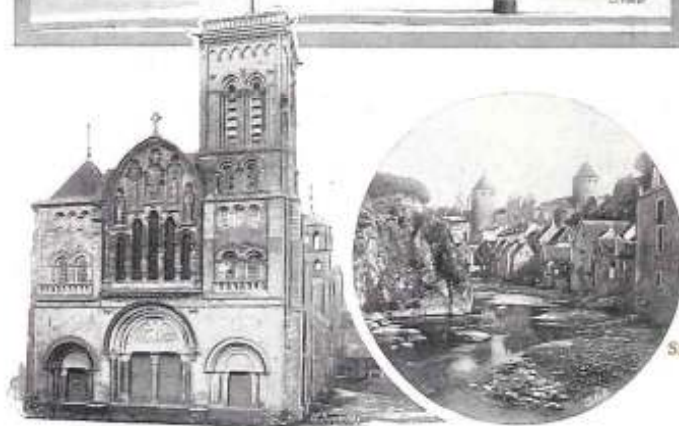


Auxerre.
The Clock Tower

Cathedral
of Sens.



Dijon.
Palais
des Ducs.



Church of Vézelay.

SEMUR.



AUVERGNE - CÉVENNES - VIVARAIS.

The mountains of Auvergne, the Velay, and the Vivarais, though relatively of little elevation, are extremely original in shape and aspect. Every crank and twist in this strange jumble of extinct craters is the work of volcanic upheaval.

And the land of this black, fire-molten rock is, by way of contrast, near neighbour to the land of white rock graven by water, to the great limestone tables of the Causses, so oddly eroded, where the rivers hoard their streams in deep caverns peopled by marvellous stalactites.

VICHY. — One of the Queens of French watering-places, on the right bank of the Allier. Splendid parks and promenades. Environs : Cusset. Saint-Yorre. The *Montagne Verte*. The Malavaux. Randon Castle, etc.

THIERS. — One of the most picturesque towns in France; on the slope of Mont Besset (623 m.). Churches of Saint-Genès and Le Moutier (12th c.). 15th c. *Houses*. Famous cutlery works. Valley of the Durole. Archaeological excursions in the **Forez** : Roanne, *Bénissons-Dieu Abbey*. *Charlieu* ; Montbrison (*heraldic hall of the Diana*).

RIOM. — *Sainte-Chapelle*. Churches of Saint-Amable, Marthuret, and Mozat. Old houses. Museum.

CHATELGUYON. — Hydropathic station. Environs : Chazeron Castle. Gorges of Enval. Castle of **Tournoël**. Volvic. Lake of Tazanat, etc.

CLERMONT-FERRAND. — Ancient capital of Auvergne. Magnificent Gothic **Cathedral** (13th, 14th c.), remarkable windows. Church of *Notre-Dame-du-Port*, the oldest and most perfect example of Romance architecture in the region. Fountain of Jacques d'Amboise (1515). Lecoq Garden. Palais des Facultés. Museum. Saint-Allyre with petrifying springs. Environs : Montferrand. Pontgibaud. Plateau of Gergovie. Aydat Lake. Goules Pass. *Puy de Parion* (1210 m.), etc. The **Puy-de-Dôme** (1465 m., rack-tramway); Observatory at the summit. Ruins of the Temple of Mercury.

ROYAT. — Important hydropathic station at the foot of the Puy de Chateix and the Puy de Gravenoire. Fortified Romance church (12th c.). Grottoes of the Source and the Chien. The Red Grotto (panorama of the ancient Auvergne volcanoes in eruption). Chamalières. **Valley of Fontanas**.

SAINT-NECTAIRE. — Stations; Coudes and Issoire. Hydropathic Establishments. Romance church. Environs : Champeix. **Murois Castle**, one of the finest mediæval ruins, at the summit of a basaltic cone (929 m.). Lake Chambon, Lake Pavin. **Valley of Chaudefour**. Dyanne Pass (1335 m.). Le Mont-Dore. La Bourboule.



C. M. W.

ROYAT.



Ruins of Murois Castle.



Castle of Randon.



C. M. W.

Castle of Tournoël.



Vichy. The Casino.



SAINT-FOUR. — Ancient Episcopal city and mediæval fortress, on the basaltic promontory of the Plateau de la Planèze (885 m.). Vestiges of the ramparts. Curious old streets. 14th c. Cathedral. Environs : *Garabitt*. Baths of *Chaudesatgues*.

LE PUY. — One of the most curious towns in France. Fine Romano-Byzantine Cathedral (12th c.). Statue of N.-D. de France. *Aiguilhe Rock*. Environs : *La Chaise-Dieu*, with remarkable Abbey. *Polignac*. *La Roche-Lambert*. The *Mézenc* (1754 m.). The *Gerbier de Jonc* (1551 m.). *Yssingaux*. The *Meygal* (1438 m.). *Saint-Agrève*, etc. **Lake of Issarlès.** — On the new line from Le Puy to Langogne : *Solignac*, *Pradelles*.

VALS-LES-BAINS. — Hydropathic station and centre for excursions in the Vivarais, connected with the main line from Lyons to Marseilles by a motor-bus service from Montélimar to Le Teil. Environs : *Aizac Crater*, *Thueys* and the *Pauc des Géants*, a basaltic causeway. *Paolive*, a jumble of dolomites. *Largentière*, old city with a castle.

GORGES OF THE ARDÈCHE (Station : Ruoms-Vallon). — *Pont d'Arc*. Grotto of *St. Marcel*.

GORGES OF THE TARN. — The gem of the Cévennes : *Causse* of *Méjean* and *Sauveterre*. **Cañon of the Tarn.** Grotto of *Dargilan*. The *Bramabiau*, a subterranean river. *Mont Aigoual* (1567 m. ; hotel). Amphitheatres of *Montpellier-le-Vieux* and *Navacelles*.

VALLEY OF THE RHONE.

Watered by the finest river in France whose azure stream maintains, even in the plain, the rush and shiver of its Alpine origin, this valley is one long gap between the Alps and the Cevennes, a splendid avenue through the mountains, descending in a progression of warmth and sunlight to bright Provence.

The Rhone valley is, moreover, a great historic highway from the North to the South. Perched like eagles' nests on the heights, feudal castles, not less romantic and more highly-coloured than the "burgs" of the Rhine, guard it jealously; and its stages are marked by glorious old cities, where temples, theatres, and circuses, aqueducts and Roman arches, stand side by side with the cathedrals, castles, and ramparts of the middle ages.

LYONS. — A large and very remarkable town : unique quays, fine broad streets, splendid monuments. *Hôtel de Ville*. *Palais des Arts*. *Museum*, by far the most important in the French provinces, particularly the *Textile Museum*. *Palais de Justice*. Cathedral of *Saint-Jean*. *Notre-Dame-de-Fourvière*. Churches of *Saint-Nizier*, *Saint-Bonaventure*,



Le Puy.



Gorges of the Ardèche
Pont d'Arc.



Gorges of the Tarn.
Castelbouc.



Wood of Paolive.



LYONS.



Ainay, etc. Place Bellecour, Place des Terreaux, Rue de la République. Banks of the Rhône and the Saône. Tête d'Or Park. Environs: Barbe Island. Charbonnières. Roman aqueducts at Baunant and Chaponost. *Mont-Pilat* (1434 m.; hotel at 1200 m.). Monts d'Or. Sanctuary of Ars. Crémieu. *Grottoes of La Balme*; etc.

VIENNE. — Temple of Augustus and Livia. Plan de l'Aiguille. Gothic Cathedral of Saint-Maurice.

VALENCE. — Romance Cathedral. The Pendentif. Maison des Têtes. Ruins of the Castle of Crussol. Tournon. Châteaubourg, etc.

ORANGE. — Triumphal Arch. Roman Theatre.

AVIGNON. — Papal Palace. Walls flanked by 39 towers. Church of Saint-Pierre. Calvet Museum. Environs: Villeneuve-lès-Avignon: Tower of Philippe le Bel. Fort Saint-André. Fountain of Vaucluse. Carpentras and Mont Ventoux (1907 m. summit accessible by motor-car).

TARASCON. — Castle of king René. Saint-Rémy: mausoleum. Triumphal Arch. — Beaucaire, with fortress.

ARLES. — Arena. Roman Theatre. Museums, etc. The Alyscamps. Church and Cloister of Saint-Trophime. The Saintes-Maries. *Abbey of Montmajour*. Les Baux, one of the curiosities of Provence.

NIMES. — Arena. *Maison Carrée* (lapidary museum). Temple of Diana. Museum. Garden of the Fountain. Gate of Augustus. Tour Magne. Environs: The *Pont du Gard*, a famous aqueduct. Church of Saint-Gilles.

AIGUES-MORTES. — Ramparts (13th c.). Le Grau du Roi.

PROVENCE - THE RIVIERA - CORSICA.

On the shores of a sea so blue that the deep blue of the sky pales before it, with the thickets of the Maures, the red porphyry of the Estérel, and the great snowy Alps rising above it, bright Provence displays an Earthly Paradise of perfume and light. Not without reason is it called "The Azure Coast". And in the offing Corsica, the Isle of Beauty, seems to float like a splendid fragment that has drifted away from the mainland.

Does anyone feel the burden of winter lie heavy on him, these shores will afford him sunshine and eternal spring, restful ease, sweet peace and the joy of life; a fairyland where sea and mountain devise scenes of matchless beauty, and offer a new delight whenever we double a cape or stand on the crest of a hill.

MARSEILLES. — The first commercial port in France, in communication with Corsica, Algeria, Morocco, Tunis, Egypt, Greece, the



Avignon.
Bridge of St-Bénézet
and the Papal Palace.



Arles.
Ruins of the Theatre.



Orange. Triumphal Arch.



Marseilles.
Château d'If.



Nîmes. The Arena.



Levant Ports, India, China, Japan, Australia, the east and west coasts of Africa, South America, etc.

Principal curiosities: The Old Port. Fort Saint-Jean, Port and *Cathedral of the Jollette*. Chapel of N.-D. de la Garde (splendid view; lift). Abbey of Saint-Victor. *Palace of Longchamp* (museum). Promenades of the Prado and the Corniche. *Château d'If*.

From Marseilles to Hyères, charming little resorts for winter and summer (sea-bathing):

Cassis. La Ciotat. Saint-Cyr-la-Cadière (Lecques Beach). Bandol. Ollioules-Sanary. Tamaris-sur-Mer. Les Sablettes.

HYÈRES-LES-PALMIERS. — Important medical station on the coast, 2 1/2 miles from the sea. Exceptional climate, marvellous flora and vegetation. Environs: **Isles of Hyères.** Giens Peninsula. The Mont des Oiseaux. The Coast and Mountains of the **Maures** (Bormes, Le Lavandou, Cavalaire, Pardigon, Saint-Maxime, etc. Saint-Tropez and the Cape Camarat Peninsula. Cogolin and the Chartreuse of La Verne).

FRÉJUS. — Ancient *Forum Julii*. **Roman Ruins:** Arena, Ramparts, Theatre, Aqueduct, etc. Cathedral of Saint-Etienne (11th, 12th c.). Cloister. Episcopal Palace, etc.

SAINT-RAPHAEL. — Winter and summer resort. Sea-bathing. Starting-point of the splendid *Corniche d'Or Road* along the Porphyry Coast (Agay, Anthéor, Le Trayas) of the **Estérel Mountains:** Sainte-Baume, Mal-Infernet. Mont-Vinaigre (616 m.). Terrace of Cape Roux (453 m.). Espéro-Pax Gardens. Pointe de l'Esquillon, etc.

CANNES. — One of the most famous resorts on the Coast. Extremely mild temperature. Magnificent hotels, villas, and gardens. Fine promenades: the Croisette, California, etc. Environs: Le Cannet. The Grand Pin. Hermitage of Saint-Cassien. **Lerins Isles.** Théoule. La Napoule (Golf Club), etc.

GRASSE. — Altitude of 325 meters (cable-tram from P. L. M. station to the town), remarkable for its numerous gardens of roses, jessamines, jonquils, mignonette, violets, orange-blossom, etc. Environs: Gorges of the Loup. *Thorenc*, a summer and climatic resort (altitude of 1280 m.).

JUAN-LES-PINS, between the capes of Antibes and Croisette. Picturesque forest of parasol-pines.

ANTIBES. — Bathing and winter resort. **Cap d'Antibes,** with wonderful gardens and villas.

NICE. — World-renowned winter resort. *Carnival Fêtes.* *Regattas.* Spring and Mid-Lent Festivals. Opera. Municipal Casino. Pier-promenade. Clubs. Promenades: des Anglais, du Paillon, du Château. Environs: Corniche Road. Peninsula of Saint-Jean. Mont Chauve (840 m.). Gorges of the Giens and the Mescla. Touët de Beuil. *Petra-Cava* (winter-sports), at the foot of the Aution (2080 m.). — Steamboats to Corsica



Nice.



CANNES.



Monte-Carlo.
The Terraces.



Mentone.
The gardens.



Nice.
Packet-boat leaving for Corsica.



(7 hours from Nice to Ile-Rousse). — Starting-point of the great P. L. M. Alpine Route motor-car service, by the fine Valley and Gorges of the Var.

VILLEFRANCHE. — Splendid roadstead. Sea-bathing.

SAINT-JEAN. — Station : Beaulieu. Winter resort (sea-bathing), on Cap Ferrat.

BEAULIEU. — Delightful winter resort. Picturesque rocks of La Petite-Afrique.

Ex, and Cap d'Ail. — Winter resorts.

MONACO. — Winter-station and sea-bathing resort. Palais des Princes. Oceanographic Museum.

MONTE-CARLO. — A Queen of fashionable resorts. Casino-Theatre. Fairy-like gardens and terraces. Station of Beau-Soleil. Cable-tram for La Turbie (Tower of Augustus). Notre-Dame de Laghet.

MENTONE. — One of the best resorts on the Coast. Exceptionally mild climate. In the neighbourhood, Cap Martin, with fine hotels and villas. Excursions : Valley of the Carréi. Sainte-Agnès. Castillon. Sospel and Castellar. Ventimiglia. Dordighera. San-Remo.

CORSICA is highly attractive to tourists who love fine scenery. The following places should be noted :

Ajaccio and its splendid Gulf, winter resort.

Evisa and the fantastic region of the Calanches.

Calvi and its old fortress.

Bastia and Cape Corse.

Orezza, *vis* Folelli station. Famous hydropathic resort.

Vizzavona. — Summer resort, at the foot of Monte d'Oro (2391 m.).

Corte. Curious Citadel. Ascent of Monte-Rotondo (2625 m.).

Ghisoni and the wild defile of the Inzecca.

Bonifacio. Grottoes. Straits.





Henry L. ...